



BRINGING IT ALL TOGETHER.

# X-HUB

## X-HUB // US PATENT: 11280107 // OTHER PATENTS PENDING

- THE CENTER OF YOUR SHELTER COMPLEX.
- WITHSTANDS THE HARSHTEST CONDITIONS.
- CONNECTS TO ANY SHELTER SIZE OR MODEL.
- CAN STAND ALONE WHEN NEEDED.

At Deployed Logix we're redefining rapid deployment. Through our extensive work with law enforcement, search and rescue teams, various first responders, private organizations both domestically and abroad, and the military, our team understands that when a crisis calls, seconds count. Discover why we are the leader in American-made, rapidly deployable disaster preparedness products.

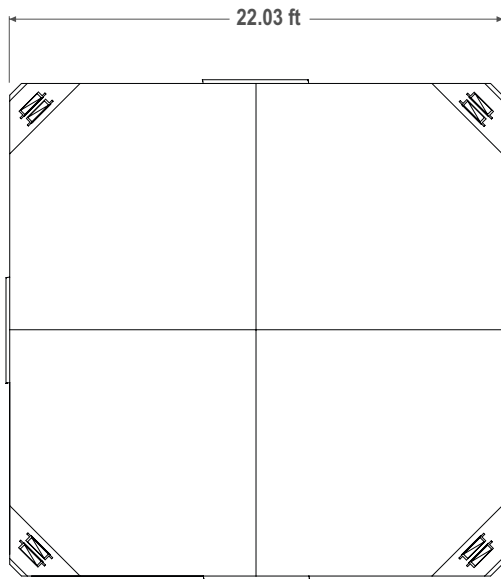


Specification and design may be altered without notice due to continuous product development. LAST UPDATED AUGUST 2022.

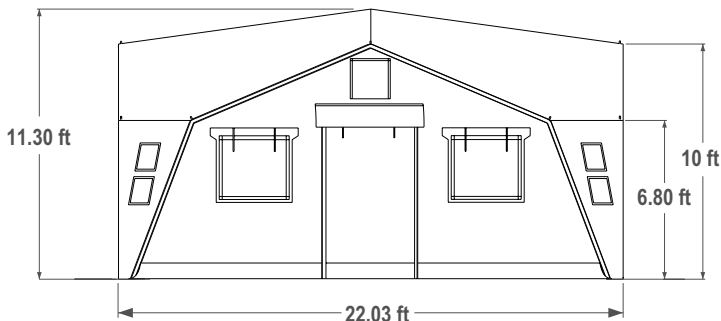
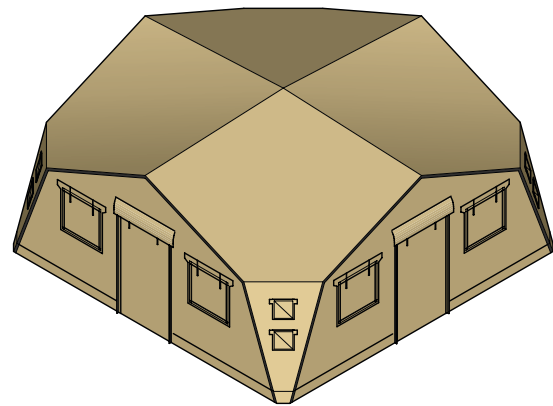
Proudly made in the USA.  
CAGE CODE: 7CFK2 | DUNS#: 079751064

# X-HUB SPECIFICATIONS

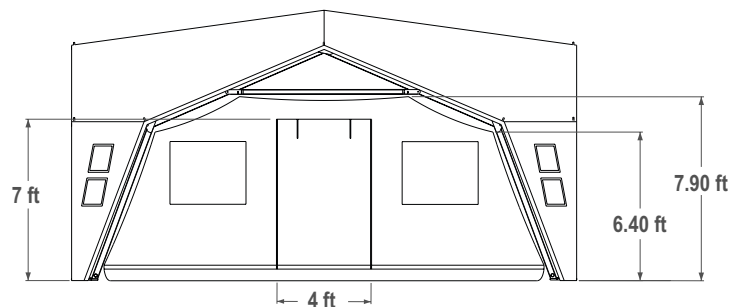
<b>DIMENSIONS:</b>	22.03 x 22.03 ft (6.71 x 6.71 m)
<b>USABLE AREA WITH INSULATION:</b>	473 ft <sup>2</sup> (43.94 m <sup>2</sup> )
<b>HIGHEST POINT:</b>	11.30 ft (3.44 m)
<b>DOORS:</b>	1 per wall
<b>WINDOWS:</b>	2 per wall
<b>ENVIRONMENTAL CONTROL DUCTS:</b>	Sets of 4
<b>REQUIRED PERSONNEL:</b>	3 minimum // 4 desirable
<b>INSTALLATION TIME:</b>	30 minutes
<b>SNOW AND RAIN RESISTANCE:</b>	<b>Snow:</b> 2 in/hr (5.08 cm/hr) <b>Rain:</b> 10 lb/ft <sup>2</sup> (48.82 kg/m <sup>2</sup> )
<b>WIND TOLERANCE:</b>	65 mph, gusts 75 mph (104 kmh, gusts 120 kmh)
<b>TOTAL PACKED WEIGHT SXHUB:</b>	743 lb (337.0 kg)
<b>TOTAL PACKED WEIGHT SRXPXHUB:</b>	1053 lb (477.6 kg)



Top



Front // Endwall



Front // Thermal Insulation Liner